



# Specialized Casting

At the Cornerstone of  
Professional Casting



Construction Machinery



Agricultural Machinery



Automobile Parts



Wind Energy Parts



[www.wkmfg.com](http://www.wkmfg.com)

# WKM's Philosophy

Customer-oriented Thinking

Safety

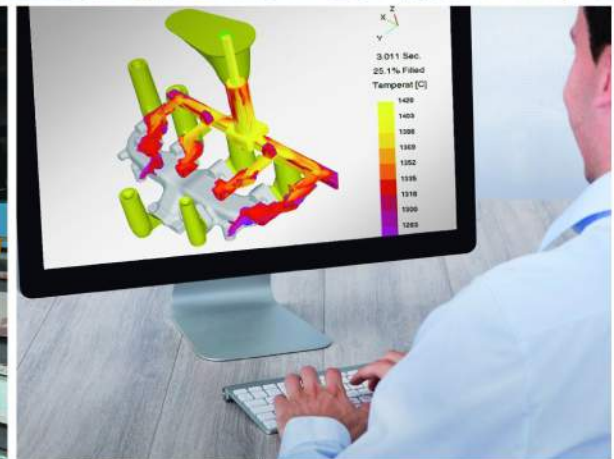
Quality

Efficiency

Integrated Service



DISA MATCH 24/28



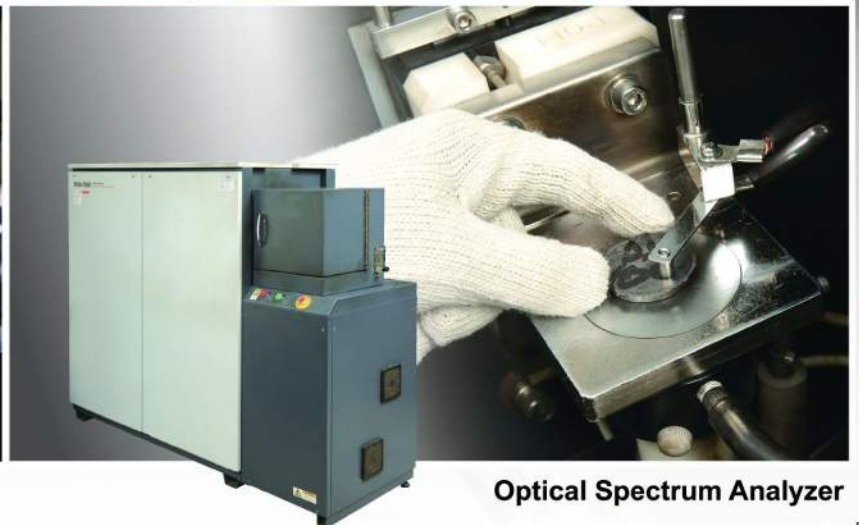
Casting Simulation

# Optimized Production

By strictly following the guidelines of the ISO/TS 16949 quality management system, all WKM's operations provide amazing product development and production efficiency. We also continually plan and strictly control all our manufacturing processes. Furthermore, we implement an efficient monitoring system on all our products' quality, which together with our well-organized production management skills, helps us to maintain on-time delivery and outstanding customer support.



Metallurgical Microscope



Optical Spectrum Analyzer

# Total Quality Management

Advanced  
Product Quality  
Planning

Standardized  
Operations

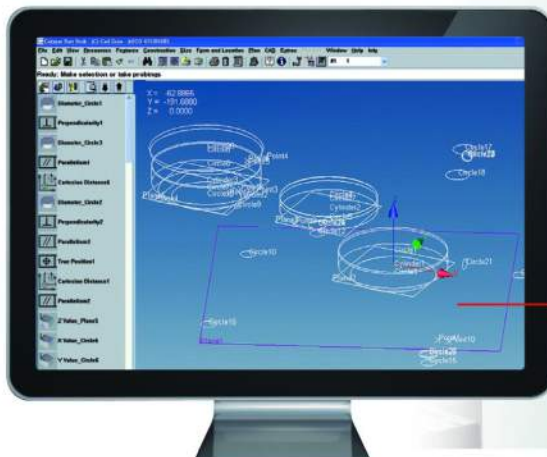
Continuous  
Process  
Improvement

After-Sales  
Service

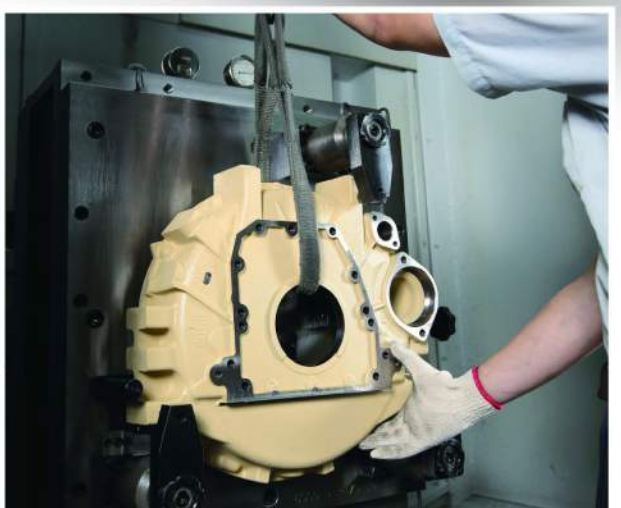
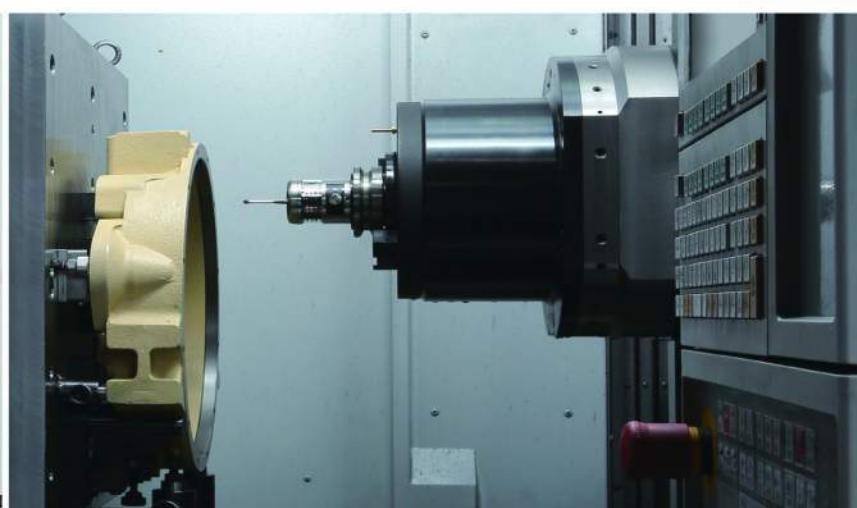


## The Equipment

WKM operates the latest CNC machining centers so that we can offer our customers' high quality machined parts. Our equipment can perform both turning and milling operations, which enables us to complete almost all machining in-house, ensuring that the dimensions of our produced parts meet strict tolerances.



Coordinate Measuring Machine



**CNC Machining**

**Large Workpiece Machining**

# Applications

WKM is experienced in producing parts for steering, hydraulic, suspension, transmission, and engine components. We also produce expert parts for the construction, agricultural, automobile, and other industries. Over the years our parts have been sold across Asia, North America, and Europe.



## Construction Machinery



## Agricultural Machinery



Housing



Cylinder Housing



Crankshaft



Rotor



Gear Case



Exhaust Manifold  
(High Si-Mo)



Gear Case



**Automobile Parts**



**Wind Energy Parts**



**Exhaust Manifold  
(High Si-Mo)**



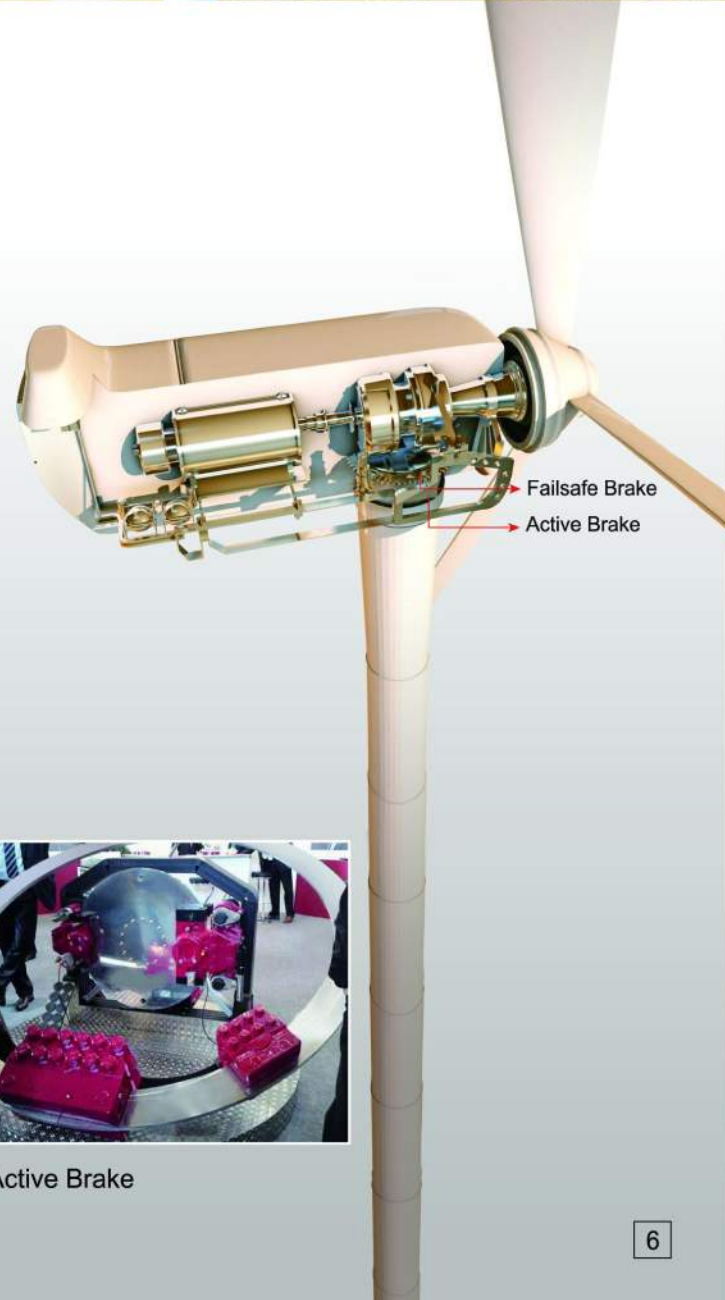
**Disc**



**Planet Carrier**



**Exhaust Manifold  
(High Si-Mo)**



**Failsafe Brake  
Active Brake**



**Active Brake**

## Global Sales & Markets



**World Known** has distributed products worldwide, in countries such as the USA, the UK, Germany, Japan, Belgium, Sweden, Denmark, Mexico, Brazil, China, India, and Malaysia.

■ **Certifications: ISO/TS 16949**



Taiwan Head Office



**World Known Mfg Co., Ltd.**

TEL:+886-4-2566-4630 FAX:+886-4-2566-7557

No.472, Sec 3, Ya-Tan Rd., Ta-Ya Dist., Taichung City, Taiwan 428

Fuzhou Subsidiary Company



**World Known Precision Industry Co., Ltd.**

TEL:+86-591-2883-5061 FAX:+86-591-2883-5062

Hu-wen Road, Wen Wu Sha Town, Changle City, Fuzhou, Fujian Province, China 350207

✉ [info@wkmfg.com](mailto:info@wkmfg.com) 🌐 [www.wkmfg.com](http://www.wkmfg.com)